

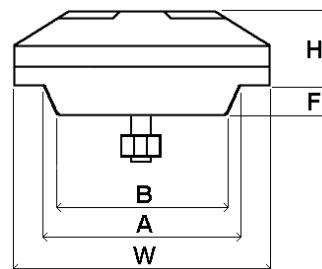
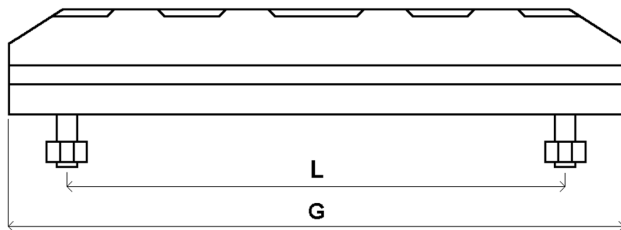


PASSION FOR PARTS

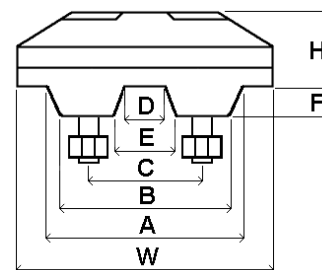
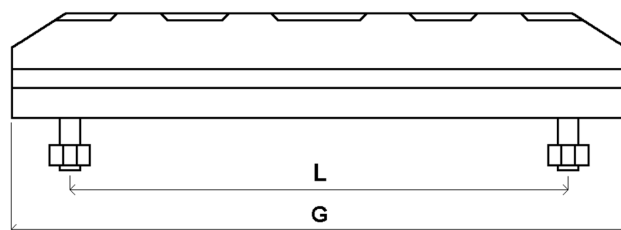


**USCO** SpA

ITR RUBBER PADS  
(BOLT ON)



Codice	Applicazione	Passo catena	Dimensioni										
			A	B	C	D	E	F	G	H	L	W	
RP90/150/230	5-18 q.li	90	50	42					15	230	15	150 (M12)	60
RP101/150/200	20-35 q.li	101,6	56	50					15	200	15	150 (M12)	56
RP101/199/250	20-35 q.li	101,6	56	50					16	246	19	199 (M12)	68
RP101/199/300	20-35 q.li	101,6	56	50					16	296	19	199 (M12)	68
RP101/230/300	20-35 q.li	101,6	56	50					19	298	16	230 (M12)	56
RP101/199/350	20-35 q.li	101,6	54	48					16	348	20	199 (M12)	68
RP101/249/350	20-35 q.li	101,6	57	50					16	347	20	249 (M12)	69



Codice	Applicazione	Passo catena	Dimensioni									
			A	B	C	D	E	F	G	H	L	W
RP135/200.46/300A	40-55 q.li	135	83	74	46	10	18	18	300	28	200 (M12)	105
RP135/250.46/350B	40-55 q.li	135	90	84	46	9	13	14	348	25	250 (M12)	106
RP135/290.46/350Y	40-55 q.li	135	89	82	46	9	13	14	342	23	290 (M12)	105
RP135/300.46/400A	60-70 q.li	135	83	74	46	10	18	18	400	28	300 (M12)	105
RP135/300.46/400B	40-55 q.li	135	90	78	46	9	13	14	396	25	300 (M12)	106
RP135/300.46/400Y	Offset 50q.li	135	90	84	46	9	13	14	400	28	300 (M12)	106
RP135/350.46/450	60-70 q.li	135	83	75	46	9	14	18	446	23	350 (M12)	105
RP135/350.46/450B	40-55 q.li	135	90	84	45	9	14	14	446	25	350 (M12)	110
PP140/190.52/260	Wirtgen poly	140	91	86	52	15	20	18	260	27	190 (M12)	115
RP140/350.53/450	75-90 q.li	140	90	84	53	17	22	18	450	27	350 (M12)	123
RP154/350.58/450	70-90 q.li	154	105	97	58	10	16	20	450	28	350 (M14)	124
RP154/350.58/450Y	Offset 75q.li	154	105	96	58	11	17	20	450	28	350 (M14)	124
RP154/500.58/600	70-90 q.li	154	106	98	58	10	16	20	585	41	500 (M14)	126
RP155/230.60/295	70-90 q.li	155	98	92	60	16	22	22	295	28	230 (M12)	130
PP155/228.57/300	Wirtgen poly	155	98	92	57	18	24	19	305	27	228 (M12)	118
RP171/350.58/475Y	Offset 100q.li	171	113	106	60	13	21	20	475	25	350 (M16)	133
RP171/400.60/500	100-150 q.li	171	114	107	60	14	21	20	496	37	400 (M16)	136
RP171/400.57/600	100-150 q.li	171	104	97	57	14	21	24	594	34	400 (M16)	124
RP171/500.60/600	100-150 q.li	171	117	106	60	16	22	19	599	33	500 (M16)	135
RP171/500.57/700	100-150 q.li	171	104	97	57	14	21	24	694	32	500 (M16)	124
RP175/400.57/500	100-150 q.li	175	102	88	57	12	26	26	494	32	400 (M16)	123
RP190/400.68/600	160-220 q.li	190	125	119	68	16	22	26	595	44	400 (M20)	135